

LS Tractor



MT3E SERIES

MT345E / MT345HE / MT350E / MT350HE

VALUE COMPACT TRACTORS

6-YEAR LIMITED WARRANTY. SEE DEALER FOR DETAILS

MT3E SERIES

VALUE COMPACT TRACTORS

RECOMMENDED IMPLEMENTS/ ATTACHMENTS



LOADER:

High Capacity With
An Abundance Of
Standard Features



BACKHOE:

Excellent Capacity,
Smooth And
Consistent Operation
For Added Control



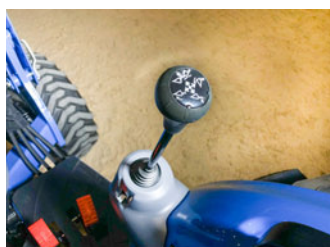
ROTARY CUTTER:
Durable Heavy Steel
Design Providing
Quality And Strength



BOX BLADE:
Features A Heavy
Welded Steel
Design For Use In
Demanding Applications

FEATURES

- **6 Year Warranty***
- **Available In 45 HP Or 50 HP**
- **3 Range Hydrostatic Transmission (2 Pedal)**
- **F8 X R8 Synchro Shuttle Shift On Gear Models**
- **Deluxe Features In An Economy Model**



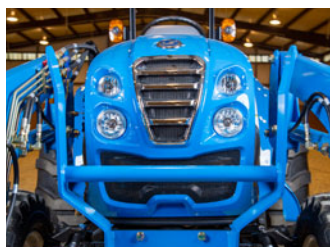
Integrated Joystick
Provides Comfortable
Access For Loader Operations



**3 Range Hydrostatic
Transmission**
(2 Pedal) Comfortable And
Efficient Operator Control



Deluxe Loader
2 Lever Skid Steer Coupler
Allows For Universal Skid
Steer Attachments



**Standard Factory Grille
Guard W/ Loader**
Full Length Grille Guard
Protects Body Panels
And Radiator



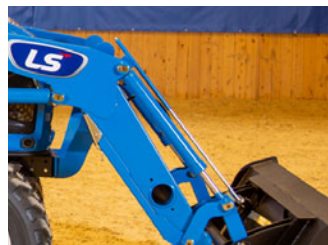
**High Capacity Three
Point Hitch**
Heavy-Duty Frame And Lift
Cylinders Enable Three-Point
Lift Capacity Up To 2,910 lbs.



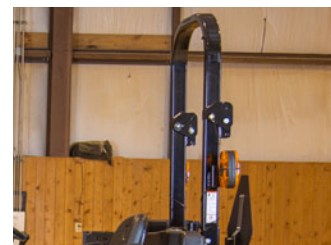
Accessibility
Easy Access Platform Via
Standard Step And Rubber
Matted Surface



Standard Tires
Choice Of Ag, Industrial
Or Turf Tires At No
Additional Cost



Loader Leveling Rod
Enables Operator To
Maintain Bucket Angle



Foldable ROPS
Provides Added Safety
And Flexibility

MT345E / MT345HE / MT350E / MT350HE



SPECIFICATIONS

CATEGORY				
ENGINE	MT345E	MT345HE	MT350E	MT350HE
Type	Vertical Water-cooled 4 Cycle Diesel Engine			
Model	L3C19-T			
Emission	EPA & CARB Tier4F, EU Stage IIIB			
Engine HP (kW)	45 (33.5)	45 (33.5)	50 (37.3)	50 (37.3)
PTO (HP)	38.2	36.0	42.5	40.0
Rated Speed (rpm)	2,600			
Displacement (in ³ .)	114.7			
Fuel Tank Capacity (gal.)	13.7			
DRIVE TRAIN				
Transmission	Synchro Shuttle/ Constant Mesh	HST	Synchro Shuttle/ Constant Mesh	HST
No. Of Speed	F8 x R8	3 Ranges	F8 x R8	3 Ranges
Brakes	Wet, Multi-disc			
PTO				
Type	Independent			
Rear (rpm)	540			
HYDRAULIC SYSTEM				
Control System	Position			
Implement Pump (gpm)	8.2			
Steering Pump (gpm)	4.8			
Steering	Hydrostatic Power Steering			
Total Flow (gpm)	13.0			
Category (3pt Hitch)	CAT I			
Hitch Lift Capacity (lbs.)	2,910			
Remote Valves	2 Pairs (Front), 1/2 Pairs (Rear,Option)			
DIMENSION				
Overall Length (Bumper To Link, in.)	125			
Overall Width With Tires (in.)	68			
Wheelbase (in.)	74.8			
Height To Top ROPS (in.)	100			
TIRE SIZE				
Front / Rear Industrial	10.0 - 16.5 / 17.5L - 24			
Front / Rear Ag	9.5 - 16 / 14.9 - 24			
Front / Rear Narrow Ag	7.0 - 14 / 9.5 - 24			
Front / Rear Turf	29 x 12.50 - 15 / 44 x 18.00 - 20			
WEIGHT				
Total Weight w/o Ballast (lbs.)	3,724	3,750	3,724	3,750

FRONT END LOADER	LL4105
TRACTOR APPLICATION	MT3E SERIES
Bucket Size (in.)	72
Maximum Lift Height (in.)	92.9
Clearance With Attachment Dump (in.)	62.1
Reach At Maximum Height (in.)	21.8
Maximum Dump Angle (deg.)	52
Maximum Rollback Angle (deg.)	47
Digging Depth (in.)	5.7
Overall Height In Carry Position (in.)	51.5
Lift Capacity (At Pivot Pin) (lbs.)	2,229
Breakout Force (At Pivot Pin) (lbs.)	3,419
Approx. Weight (Loader w/o Bucket) (lbs.)	670

BACKHOE	LB2106
TRACTOR APPLICATION	MT3E SERIES
Digging Depth (in.)	89.7
Reach From Centerline Of Swing Pivot (in.)	125.2
Loading Height (in.)	72.4
Swing Arc (deg.)	180
Transport Height (in.)	83.5
Bucket Rotating (deg.)	180
Stabilizer Spread (Down Position) (in.)	68.7
Stabilizer Spread (Up Position) (in.)	46.4
Bucket Digging Force (lbs.)	2,679

Additional Equipment/Dealer Installed Option

- Remote Control Valves 1 Or 2 Pairs
- Rear Work Lamp
- Horn
- 7 Pin Electrical Connector
- 3rd Function Kit For Front Loader

Note specifications and design are subject to change without prior notice.



LS Tractor

LS Tractor USA | P: 252.984.0700 | F: 252.984.0701 | LSTractorUSA.com
(Corporate Address) 6900 Corporation Parkway, Battleboro, NC

